

## **AnthroScan 2016 (3.4.0) for 3D Depth Sensor**

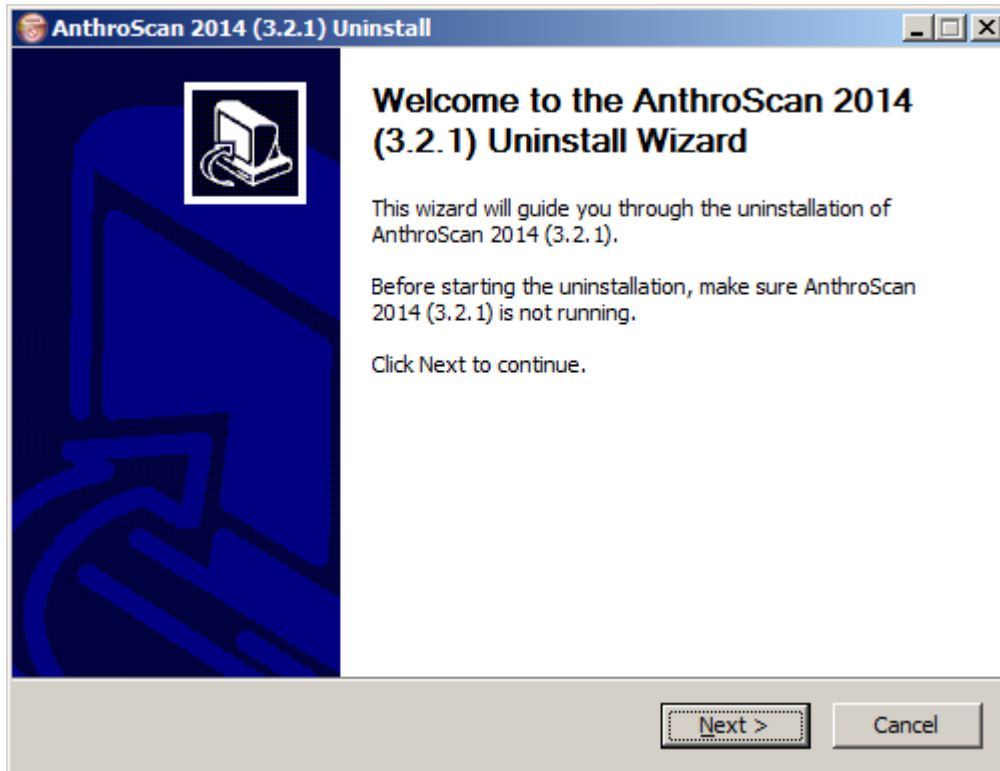
# **Installation Manual**



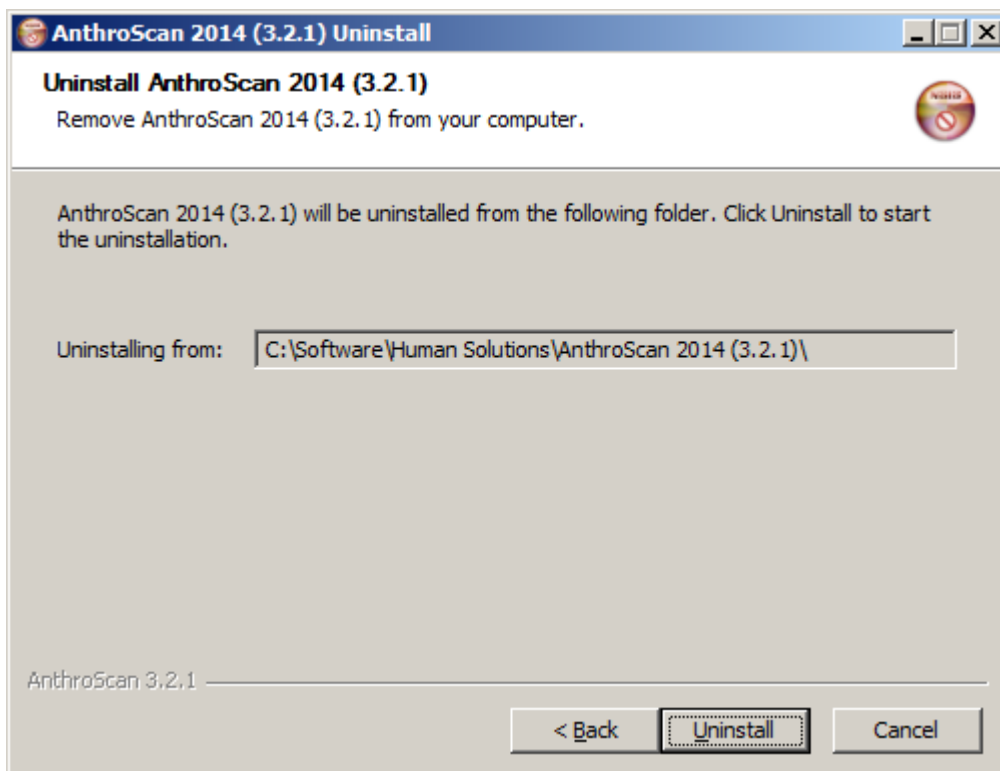
This document describes the software installation of Anthroscan 2016 (3.4.0) Software to operate the body scanner „DITUS MC“

### Preparation:

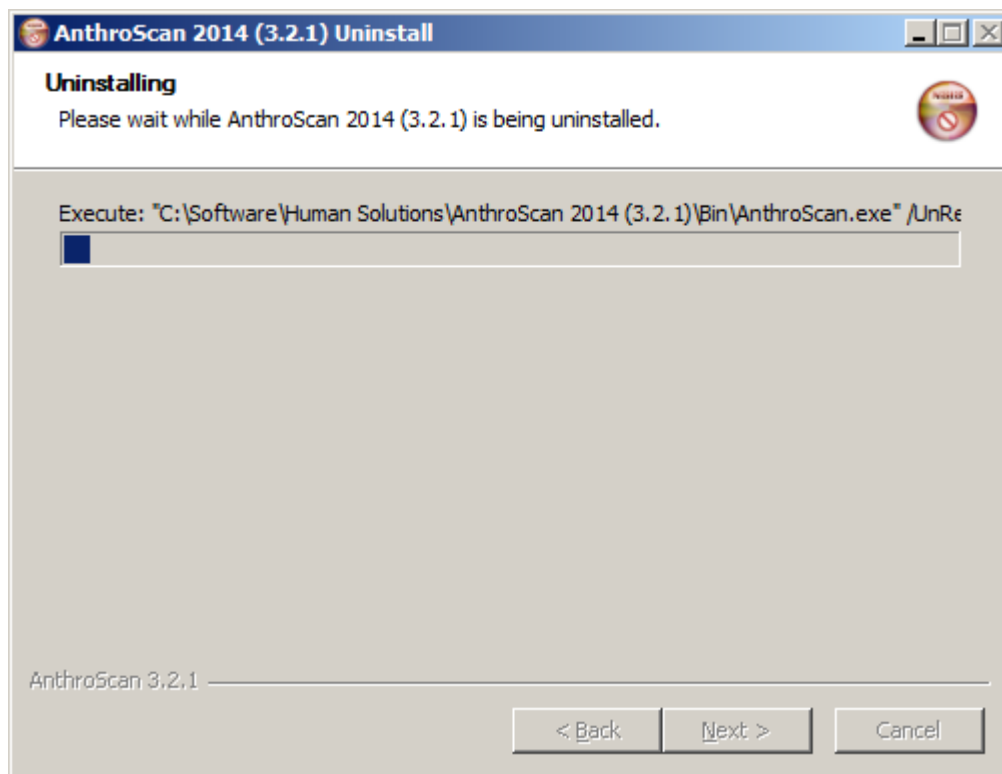
Before starting the installation of the ASUS scanner, please make sure all older Anthroscan version are de-installed. To do so, please navigate from Windows Start Button to „Control Panel“ and “Programs and Features”. Choose the older Anthroscan version from the list. Right click and select „Uninstall/Change“.



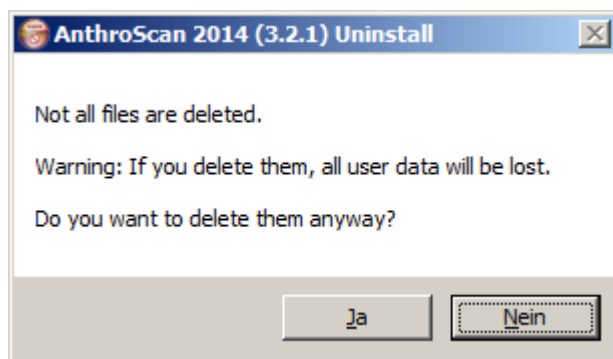
Confirm with „Next“ the de-installation of Anthroscan.



Execute de-installation with „Uninstall“.

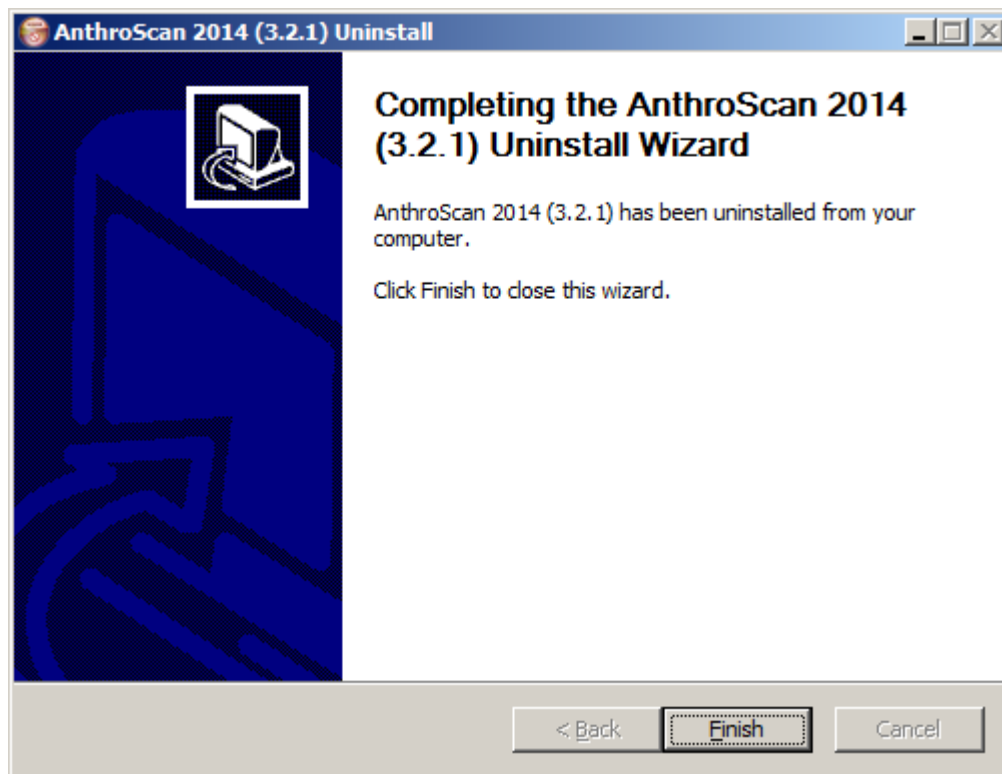


This process may take a few minutes.

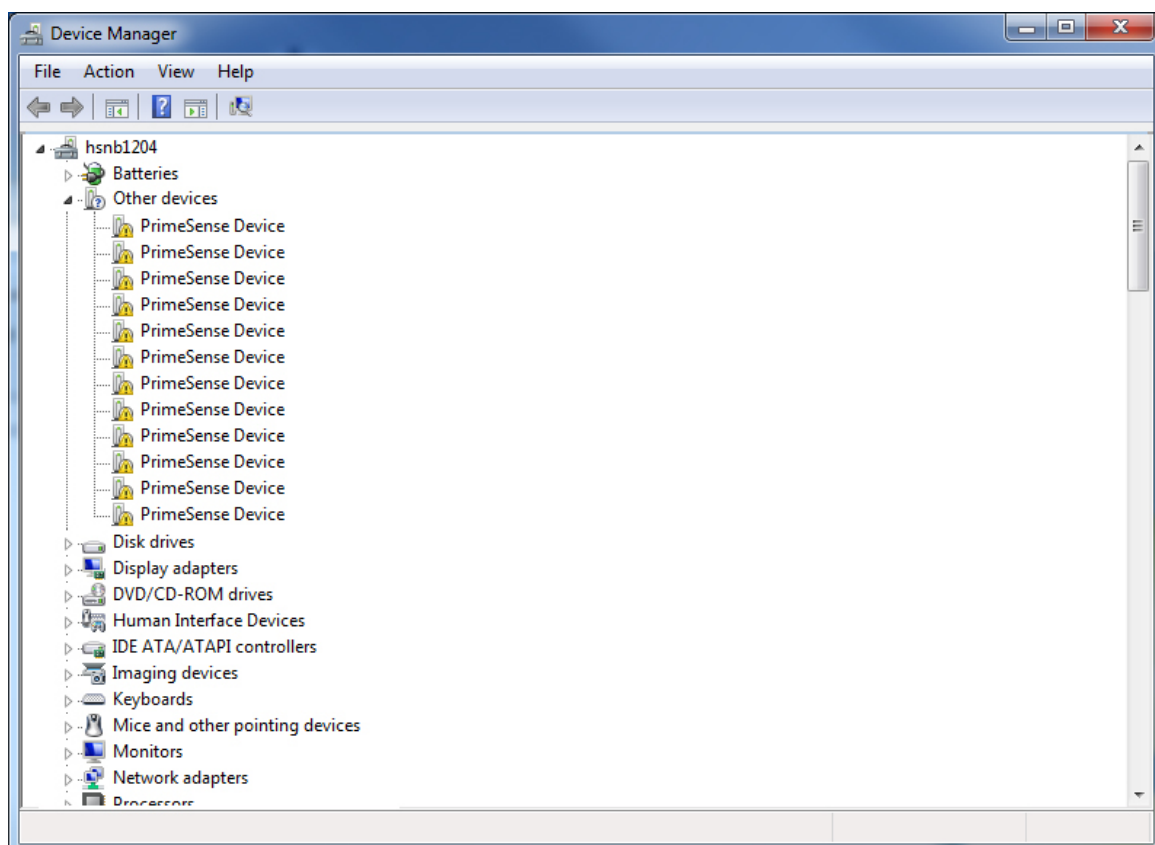


Select „Yes“ if you want to delete all files. This includes any customized configurations you may have implemented.

If you are unsure, click “No” at this time, backup the remaining files and delete them afterwards manually.



Plug in the 12 ASUS sensor USB connectors one after another. The Windows sound will help you to check whether the sensor was recognized properly. Please take your time, do not plug in the connectors too fast. Please use Windows device manager to check the status.



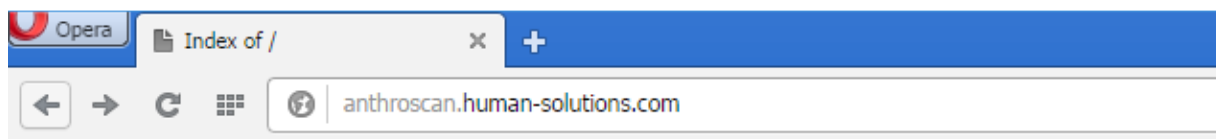
The exclamation point at „PrimeSense Device“ informs that the required driver software has not been installed yet. This will be performed in the following software setup.

### **Installation of AnthroScan 2016 (3.4.0)**




1. If you have the installation files already on your computer, please proceed with Step 5
2. Download of Anthroscan setup files. Please open the website

<http://anthroscan.human-solutions.com>

and click on the link [AnthroScan 2016 \(3.4.0\) Setup.zip](#)

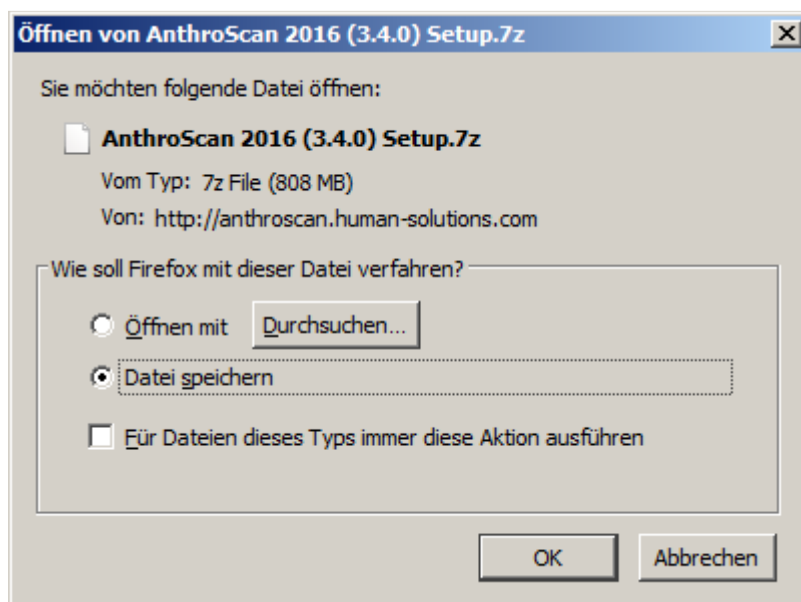


## **Index of /**

<u>Name</u>	<u>Last modified</u>	<u>Size</u>	<u>Description</u>
 <a href="#">AnthroScan 2016 (3.4.0) Setup.7z</a>	01-Dec-2015 12:14	808M	
 <a href="#">Archive/</a>	14-Dec-2015 17:45	-	
 <a href="#">Scanner Installation Manuals/</a>	22-Dec-2015 11:05	-	

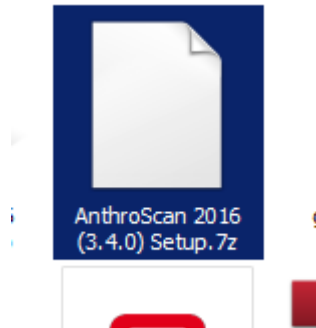
*Apache/2.2.9 (Debian) PHP/5.2.6-1+lenny16 with Suhosin-Patch mod\_ssl/2.2.9 OpenSSL/0.9.8g*

3. Please save the file on your hard drive, following the instructions of your individually browser software.








4. Open and unzip the downloaded file from your individual download folder.

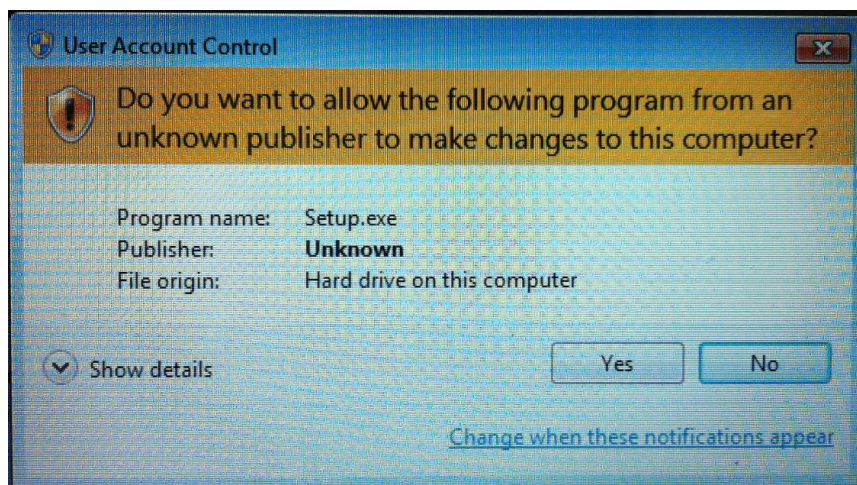
2



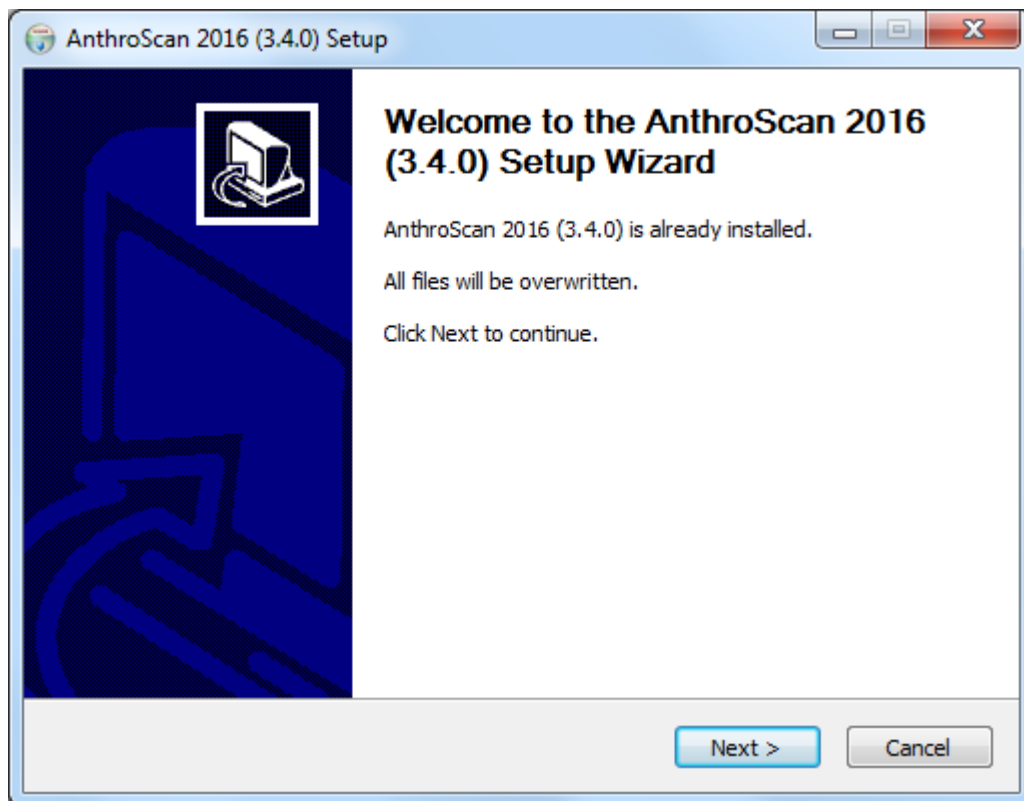
5. Open the Anthroscan folder and run „Setup.exe“.

Name	Type	Size
 AnthroScan	File folder	
 PCA	File folder	
 Setup	File folder	
 autorun.inf	Setup Information	1 KB
 Setup.exe	Application	118 KB

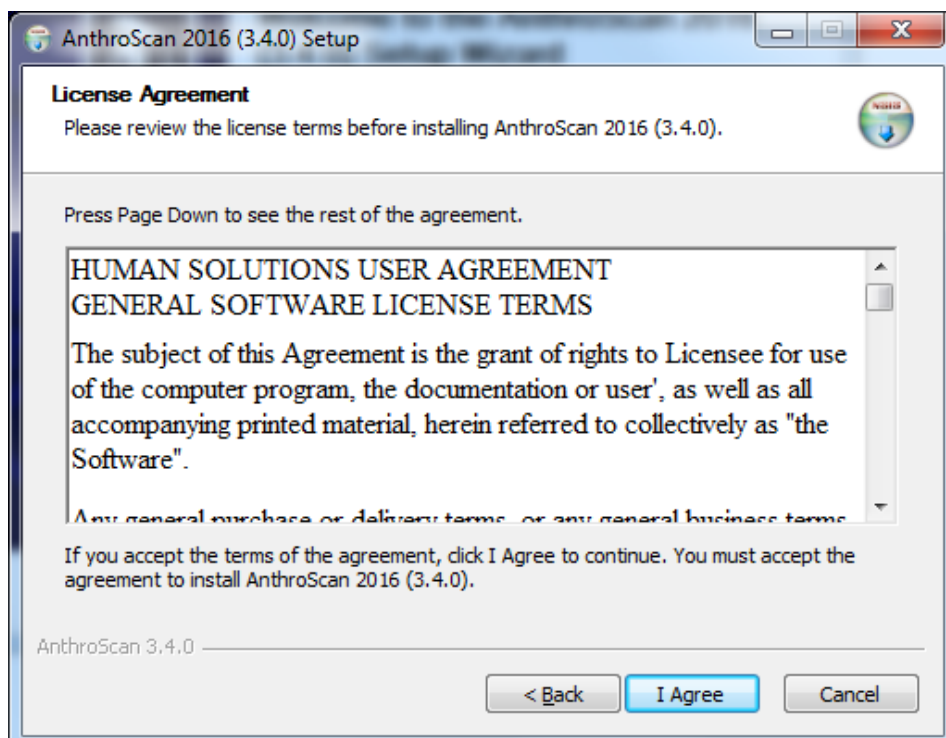
6. Please allow the installation program to make changes on your computer by confirming with „Yes“. This is necessary to install the sensor driver.



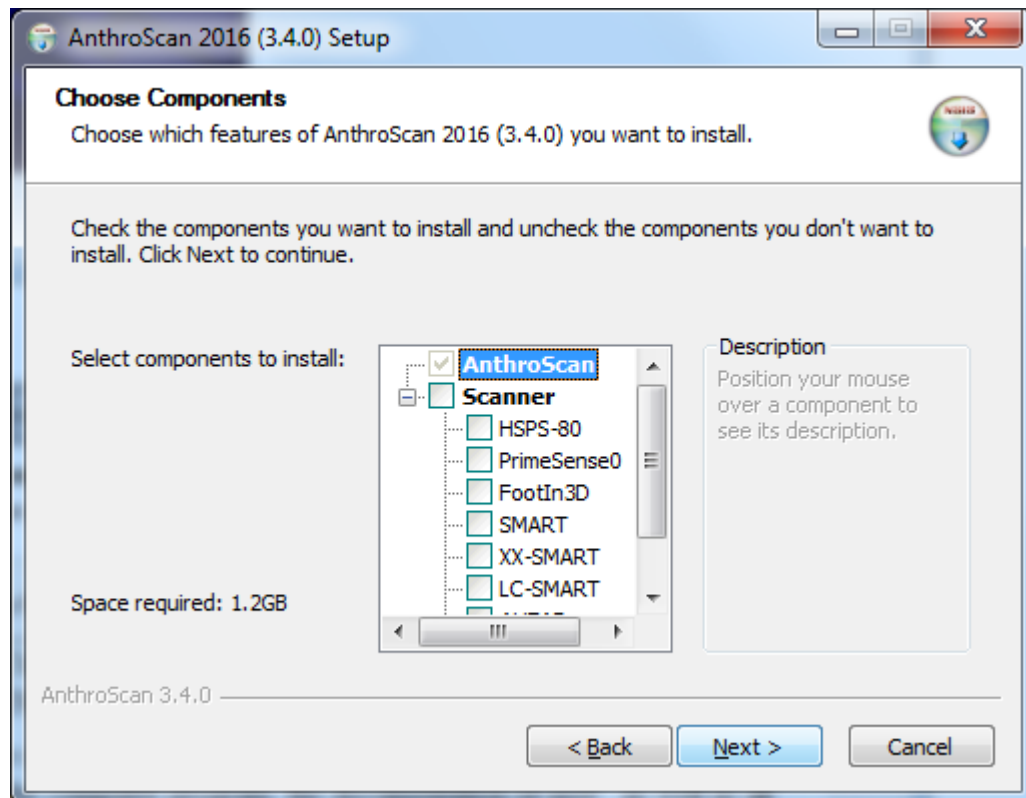
7. Please proceed with the installation by clicking on „Next“.



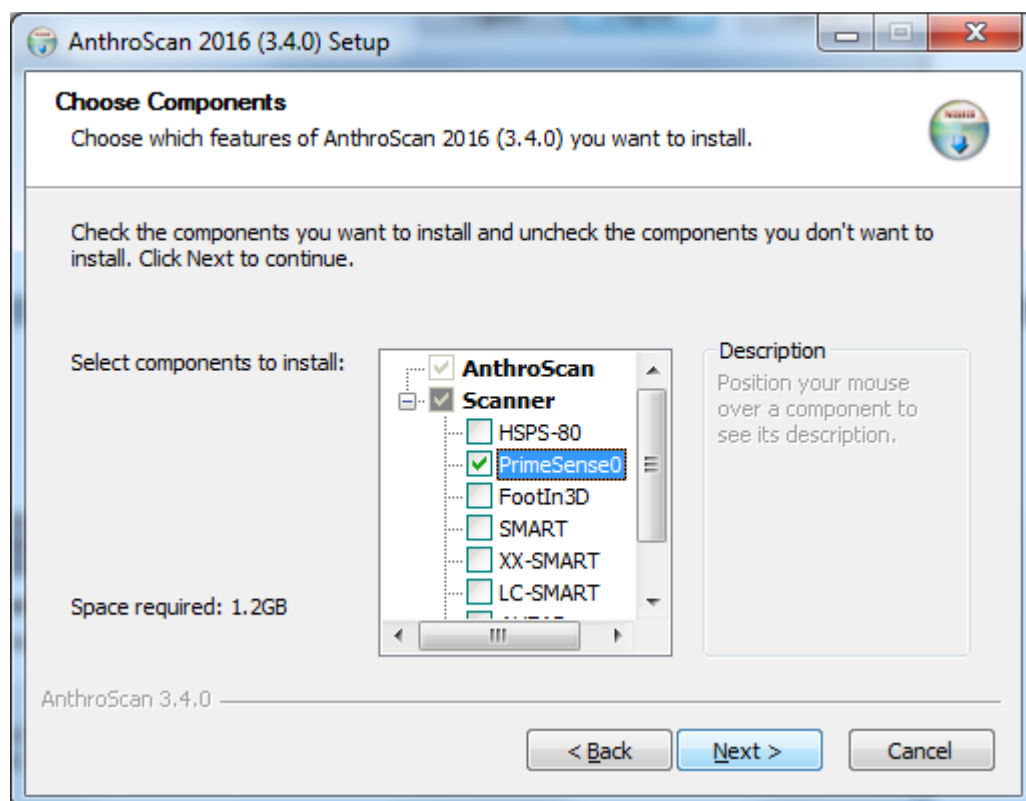
Following window informs you about the installation path. The standard folder is C:\software\Human Solutions. You can change the folder to your individual needs, please keep in mind that the software needs full access to the folder (read and write). Some of the folders in Windows 7 or higher do have certain restrictions in this regards (e.g. c:\Program Files or c:\Program Files (x86)).





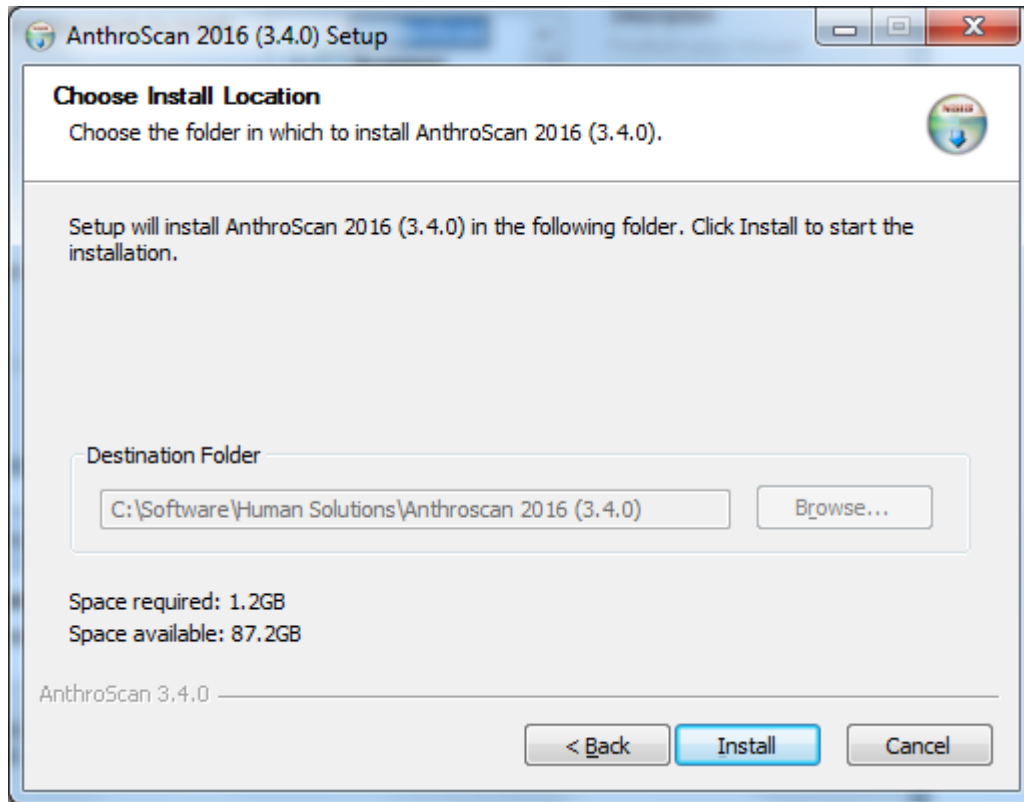


Select "PrimeSense0" for the 3D Body Scanner

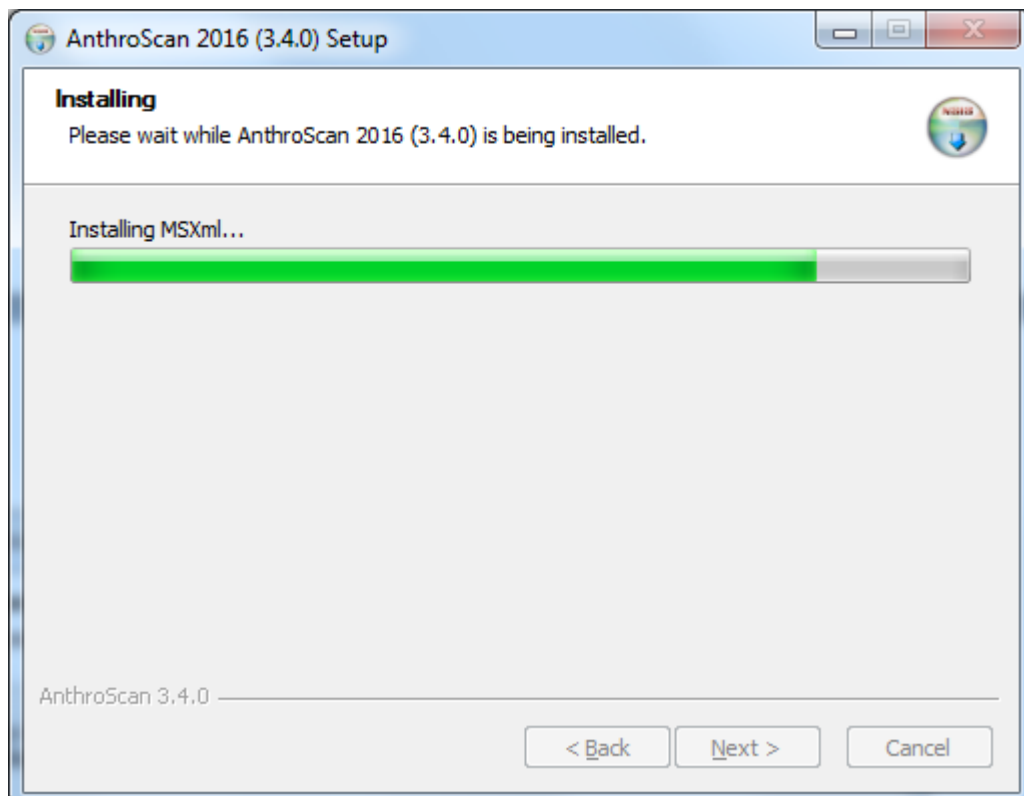




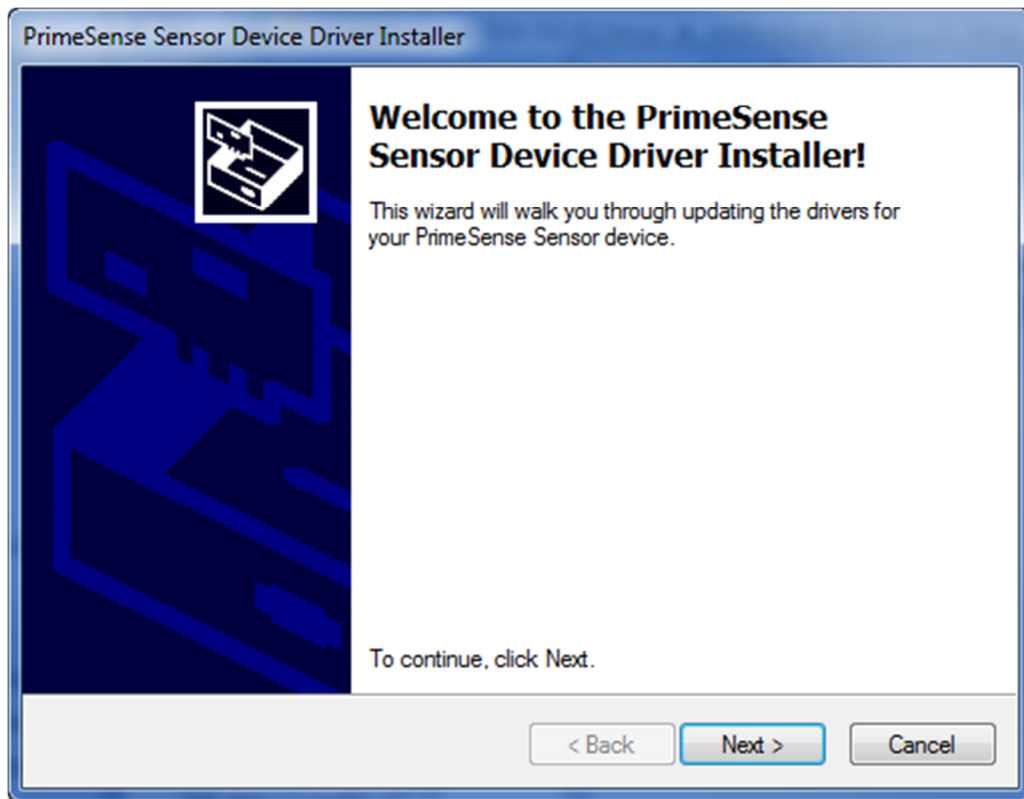
8.



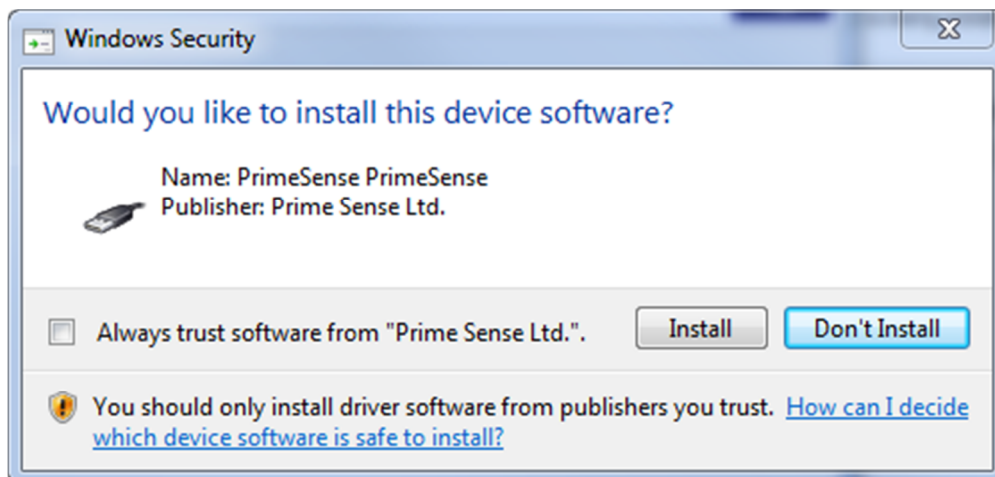
9. By clicking the button „Install“ the installation folder will be confirmed. Copying of the files will be started. This may take a few minutes.

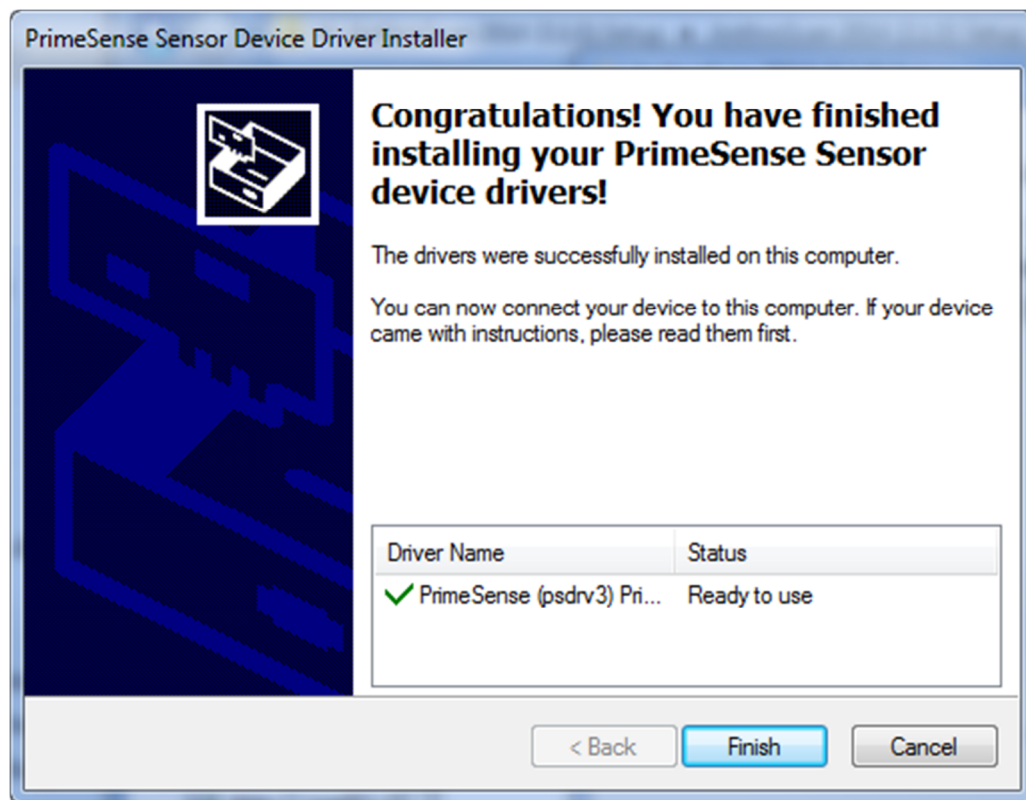


10. After copying the file the installation of sensor driver will be started. The PrimeSense Sensor Device Driver Installer window opens up:

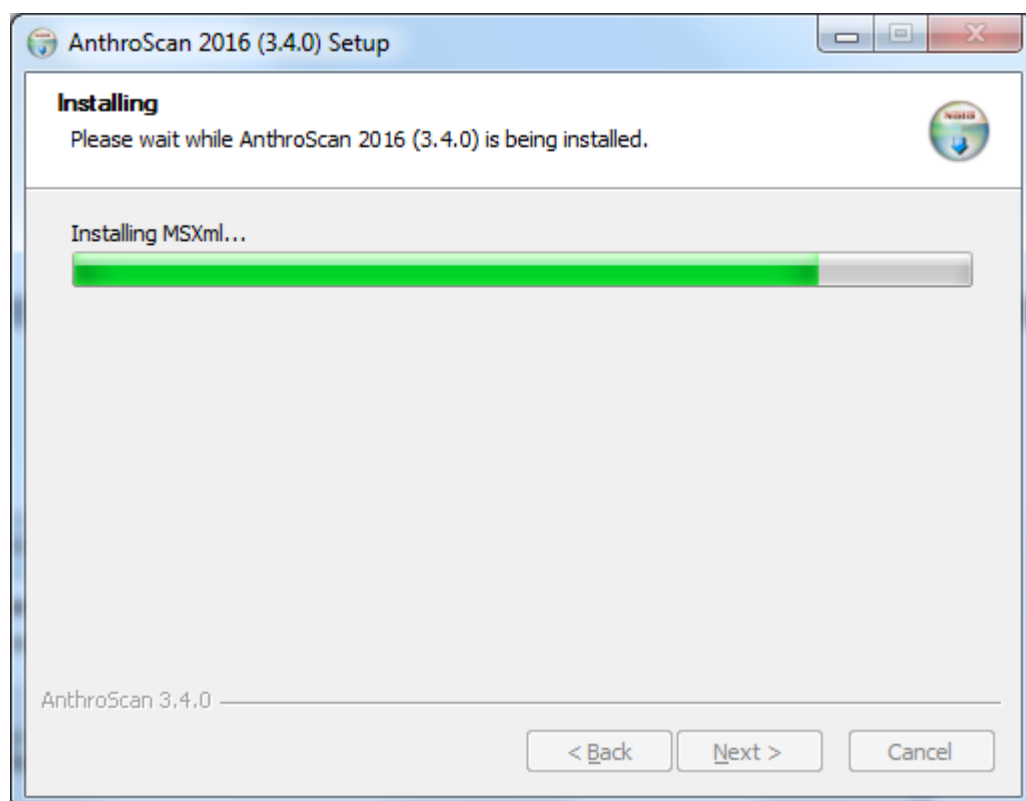


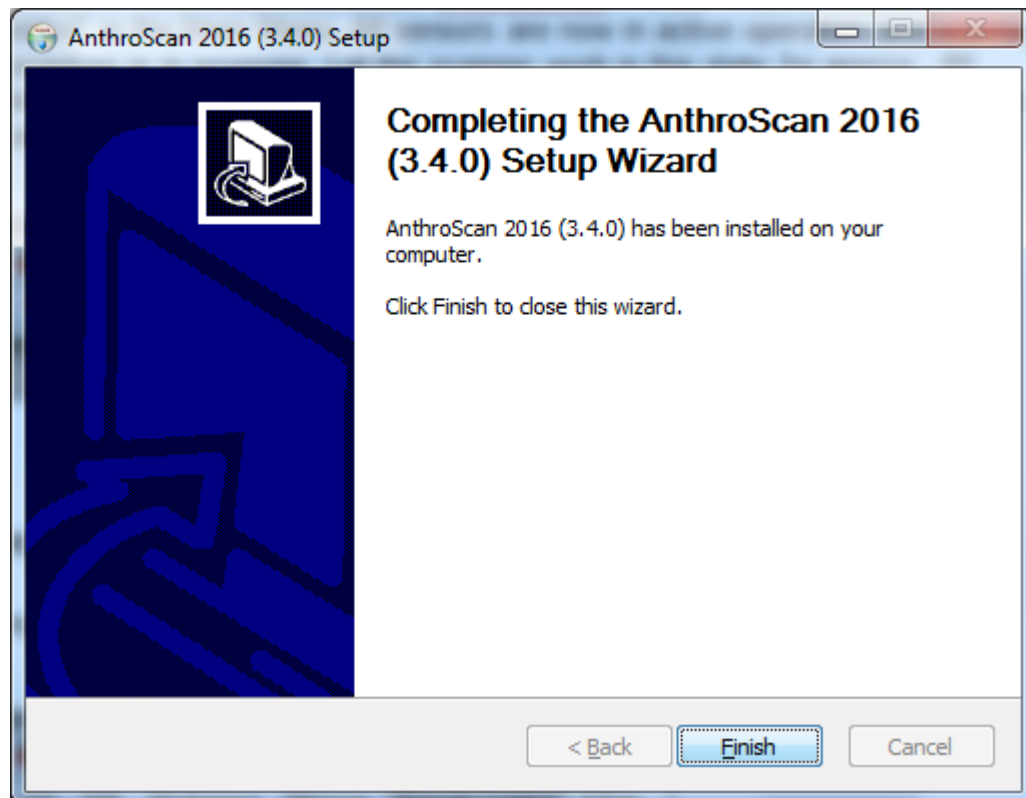
11. Please confirm the Windows security question with „Yes“





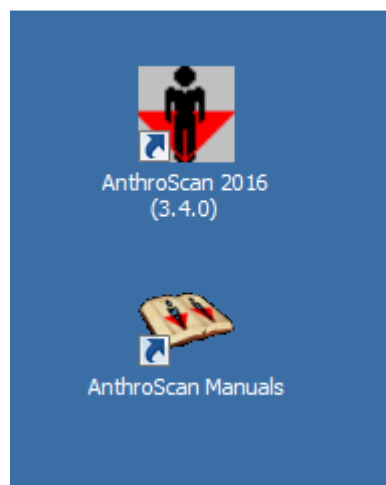
12. Close the PrimeSense Sensor Device Driver Installer by clicking on "Finish".  
The Setup will proceed.

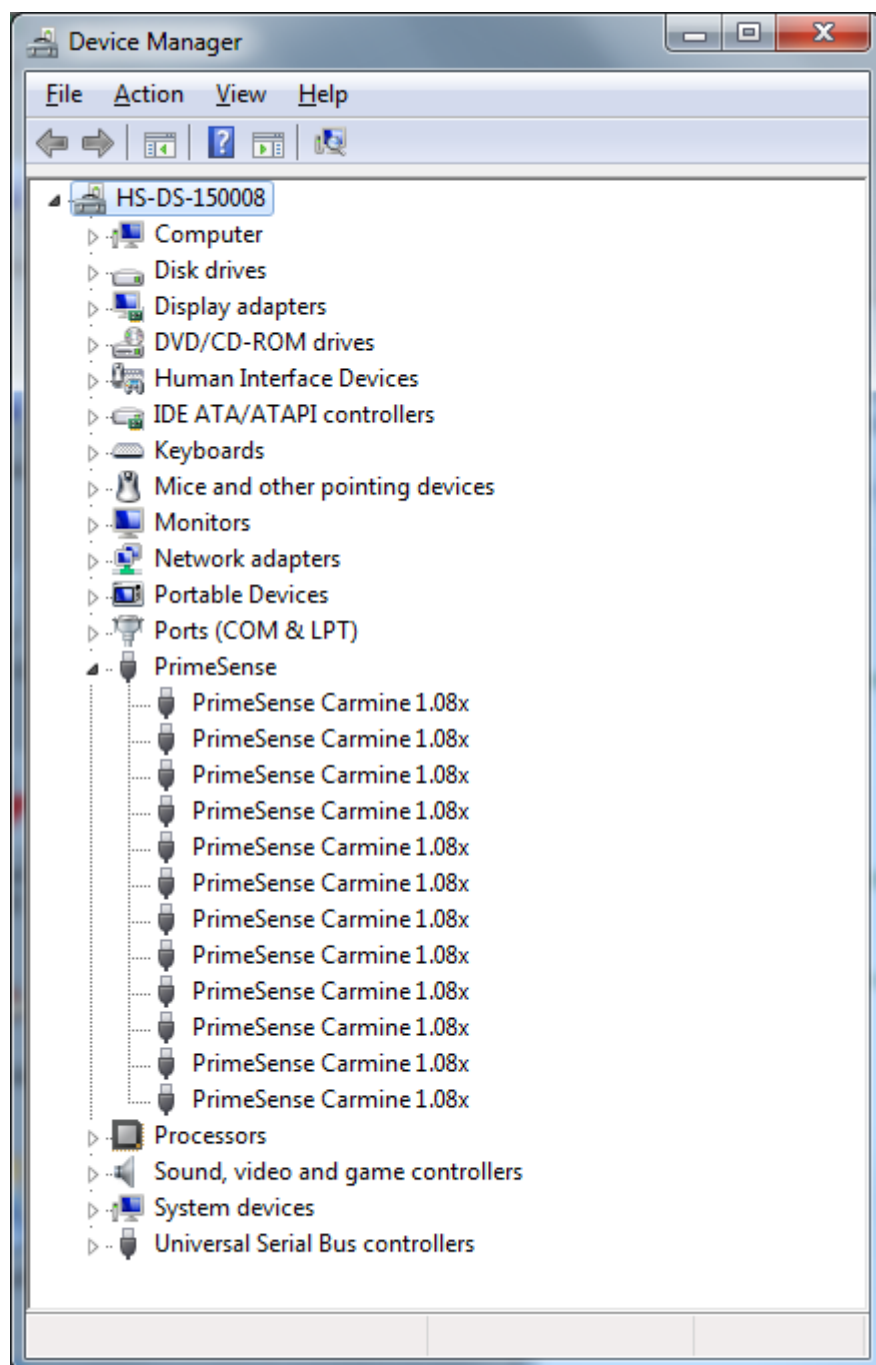




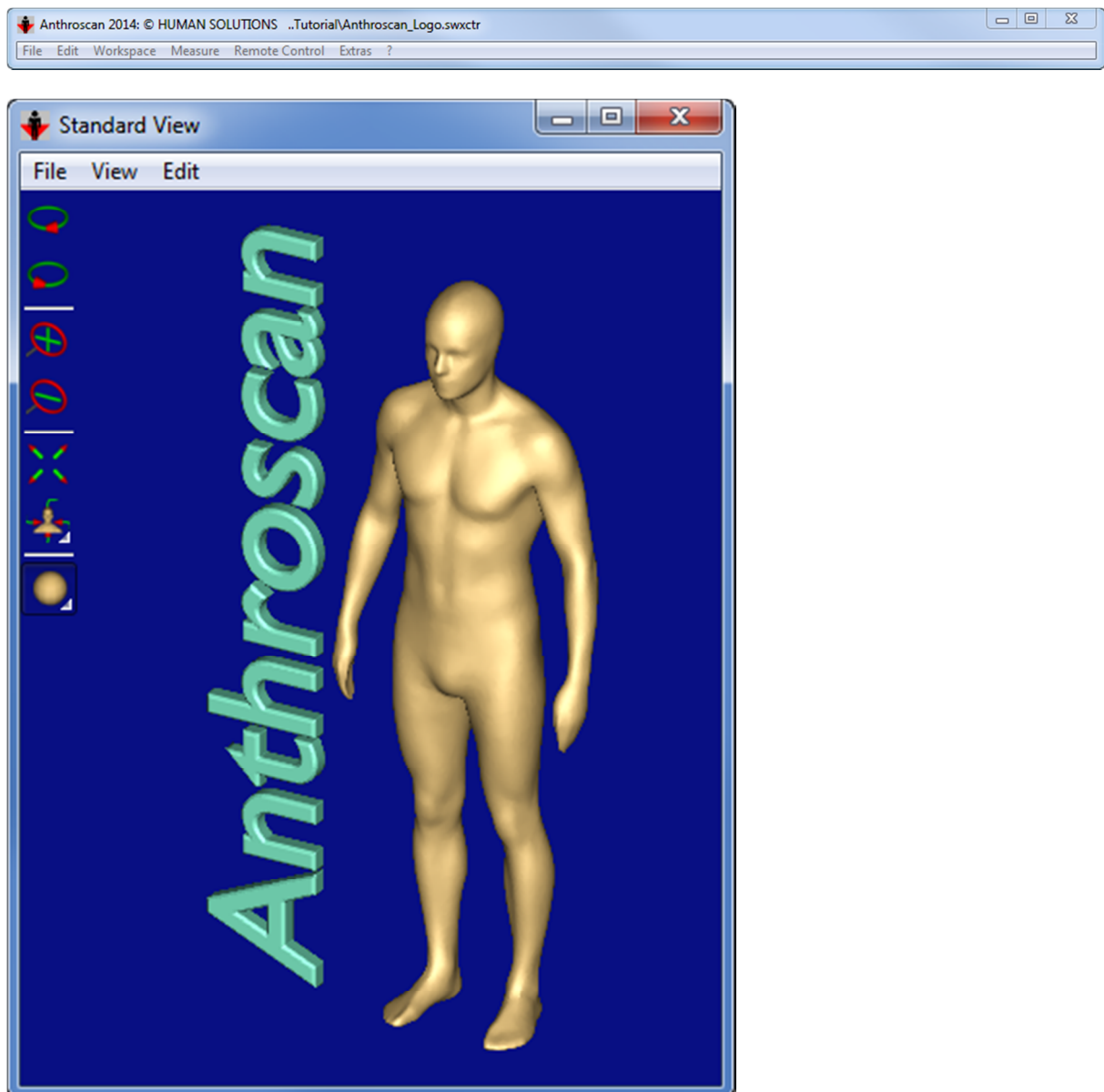
13. Click on „Finish“ to finalize the setup procedure.

14. On the desktop you will find now icons for the program Anthroscan 2014 (3.1.0) and the software manuals.





15. Software is now ready to start.



16. During the first start-up of AnthroScan 2016 the software is searching for connected ASUS sensors. If an ASUS scanner has been connected to the computer, calibration files will be downloaded from the Human Solutions server and copied to software folder. Thereby the software is now licensed and ready to be used. Please make sure that that your internet connection is still established.

17. The data output folder is set by default to  
"C:\Software\Human Solutions\Scanner\PrimeSense\Data".  
To change this folder, please refer to the Anthroscan manual.